

# Wallpaper\*

OCTOBER 2007

\*DESIGNINTERIORSFASHIONARTLIFESTYLE

COVER ART  
BY DIETER RAMS



3 guest editors 3 covers  
**DIETER RAMS**  
**HEDI SLIMANE**  
**JEFF KOONS**

Plus 350 pages of the normal stuff

UK £4.00  
US \$8.95  
AUSTRALIA \$9.95  
AUSTRIA €9.20  
CANADA \$11.95  
FRANCE €7.90  
GERMANY €9.70  
HOLLAND €7.90  
ITALY €8.70  
NORWAY NOK 79.00  
PORTUGAL €7.90  
SPAIN €7.90  
SWEDEN SEK 69.00  
SWITZERLAND CHF 16.00





**TEARDROP DIAMOND**  
*Barceló Málaga, Málaga*

Part of the Spanish Barcelo group, this hotel, by

Catalan interior designer Jordi Torres, features a spectacular lobby with teardrop-shaped paper lights and glass walls. **Sara Henrichs**  
*Estacion Vialia, Calle Heroe de Sostoa 2, Málaga, tel: 34.952 047 494, www.barcelo.com. Room rate: from €120*

**SUITE DREAMS ▶**

*Faena Hotel + Universe, Buenos Aires*

Puerto Madero is one of Buenos Aires' most happening neighbourhoods, but it's still the Philippe Starck-designed Faena Hotel + Universe, the area's first boutique hotel when it opened in 2005, that fans the creative fire. It has recently added three extravagant new suites, the best being the Imperial, a two-storey hideaway boasting a spacious outdoor terrace with panoramic views. **SH**  
*Martha Salotti 445, Puerto Madero, Buenos Aires, tel: 54.11 4010 9000, www.faenahotelanduniverse.com. Room rate: from \$550*

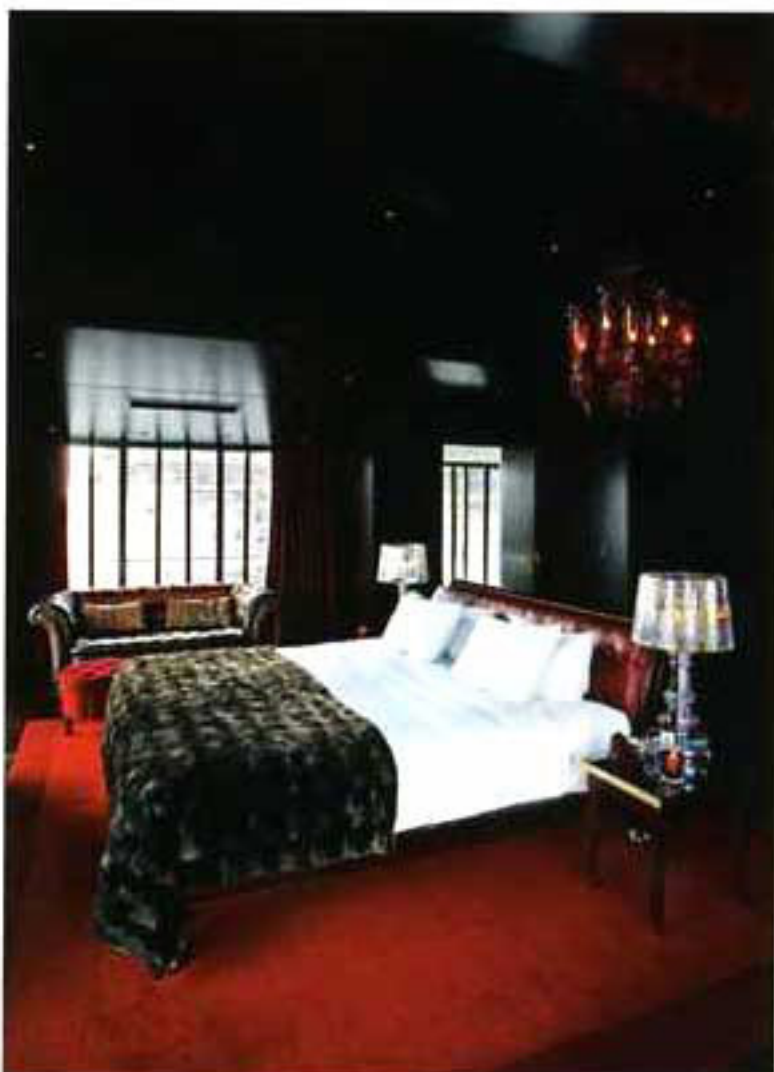
**HOTELS EXTRA**

*Mövenpick Hotel Hamburg*

A derelict water tower in Hamburg's hip Schanzenviertel district is now a 226-room hotel with two tower suites. [www.wasserturm-schanzenpark.de](http://www.wasserturm-schanzenpark.de)

*The Keating, San Diego*

San Diego's Gaslamp quarter has welcomed a sleek new hotel fitted out by Ferrari designers Pininfarina. [www.thekeating.com](http://www.thekeating.com)



**GROUP DYNAMICS ▲**

*Peninsula Hotel, Tokyo*

It all began with the Peninsula Hong Kong back in 1928, and now the hotel group has opened its eighth venture. Designed by Kazukiyo Sato, the 314 rooms look contemporary with hints of Japanese tradition. There's also an ESPA spa and a wedding chapel, but the highlight is the rooftop bar and restaurant. **SH**  
*1-8-1 Yurakucho, Chiyoda-ku, Tokyo, tel: 81.3 6270 2888, www.peninsula.com. Room rate: from ¥60,000 (\$507)*